

SyncSign[®]

Effortless Installation Digital Signage Solution

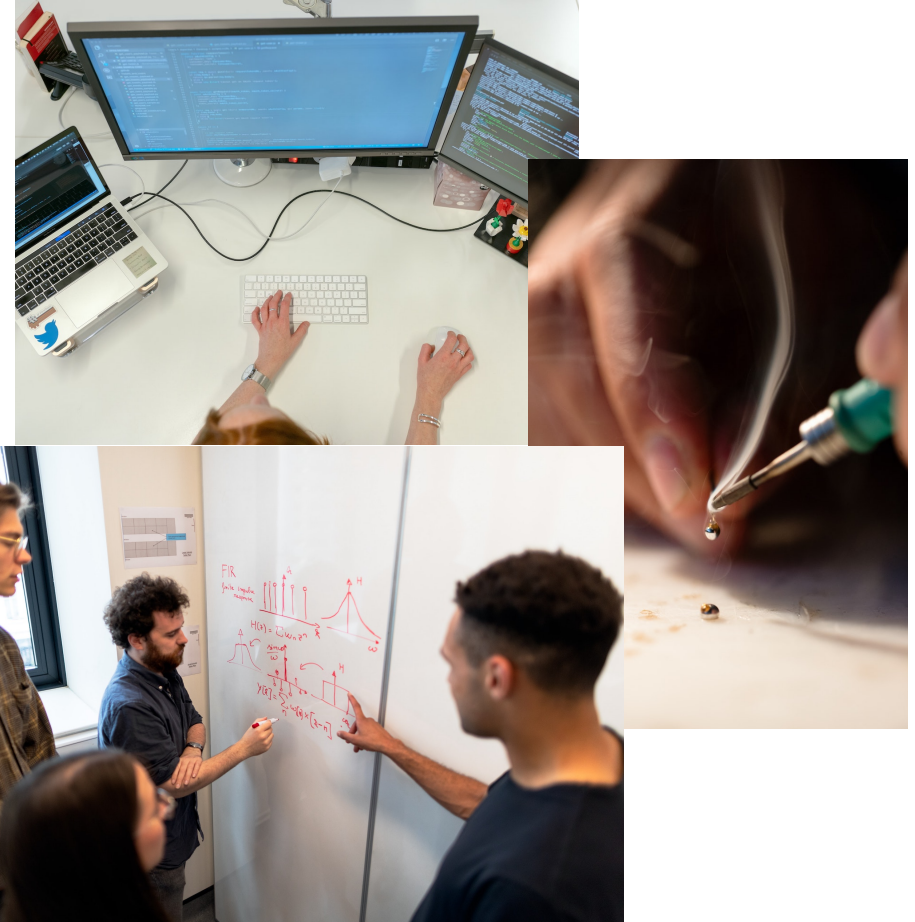


About

SyncSign is a new brand of OAZON LTD. It is a smart office solution that helps the organization transform the way it manages meeting rooms, desks, and workspaces.

In OAZON, we leverage cutting-edge IoT technology to solve problems and strive to push the boundaries of innovation in combining the software algorithm and sophisticated hardware design.

OAZON was established in California, US in 2014. Now headquartered in Shenzhen, China.



Passionate about engineering

1

Products



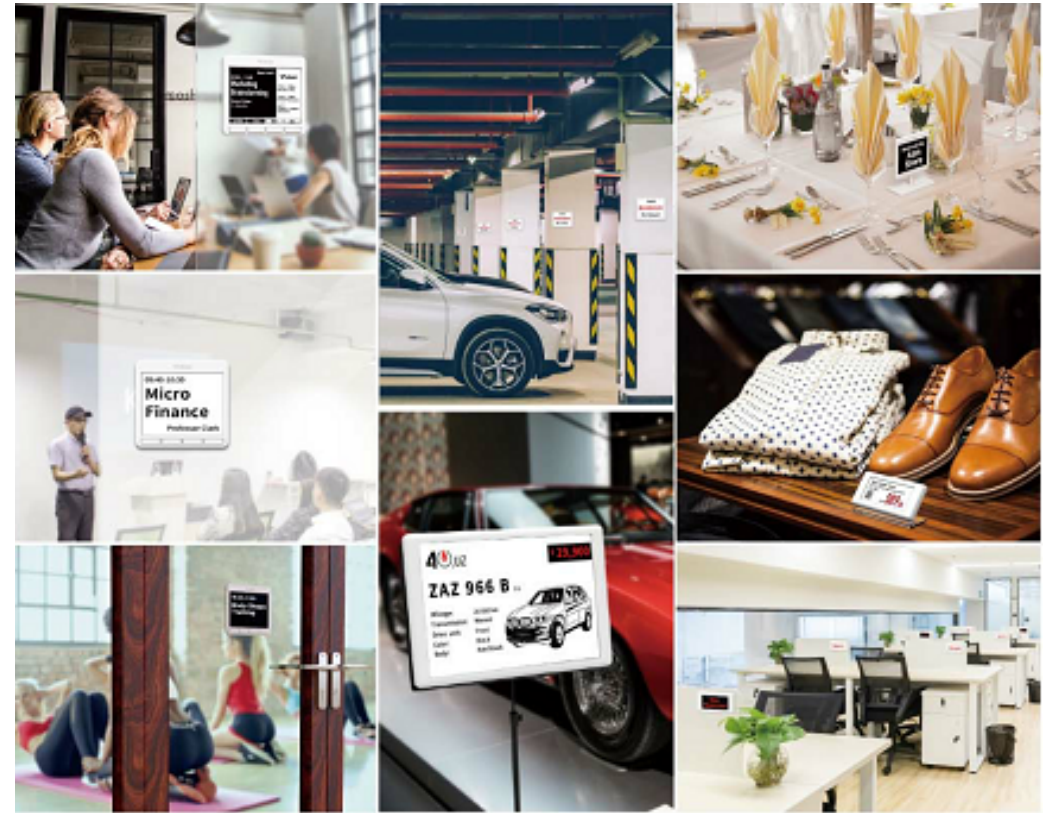
e-ink
Display + **IoT**
Sensor

Wireless E-Ink Display

With the rise of flexible working and the growth of the Internet of Things (IoT), the same technology used on the display of your Amazon Kindle is now appearing in the meeting room and across assorted working space.

If you're looking for an office management solution, it's a fabulous device.

SyncSign helps businesses in improving the efficiency of meeting room reservation and co-working desk utilization and provides powerful, intuitive and integrated solutions that deliver an efficient, connected and enjoyable working experience.



Smart Booking & Scheduling Digital Signage



SyncSign Display Selected Features



Syncs with Existing Calendars

Synchronize real-time status of the calendars.
(G Suite, Google Calendar, Office 365, Exchange)



Ultra-low Power Consumption

Radio-controlled and battery-powered.
At least 1-year battery life, benefits from the e-ink screen and new connectivity technology.



Cord-free & Effortless Installation

SyncSign can easily attach on almost any surface with the wall-mounted bracket and the super magnet on the back.



Flexible Templates & Open API/SDK

You can customize the your corporate branding or logo. Select the layout templates we offered.



Green Technology

Eco-friendly and sustainable. Get rid of any paper or printing.



Central Administration

Manage all devices from one central location via SyncSign App and secure, scalable web-based admin console.



Battery Life Comparison

SyncSign

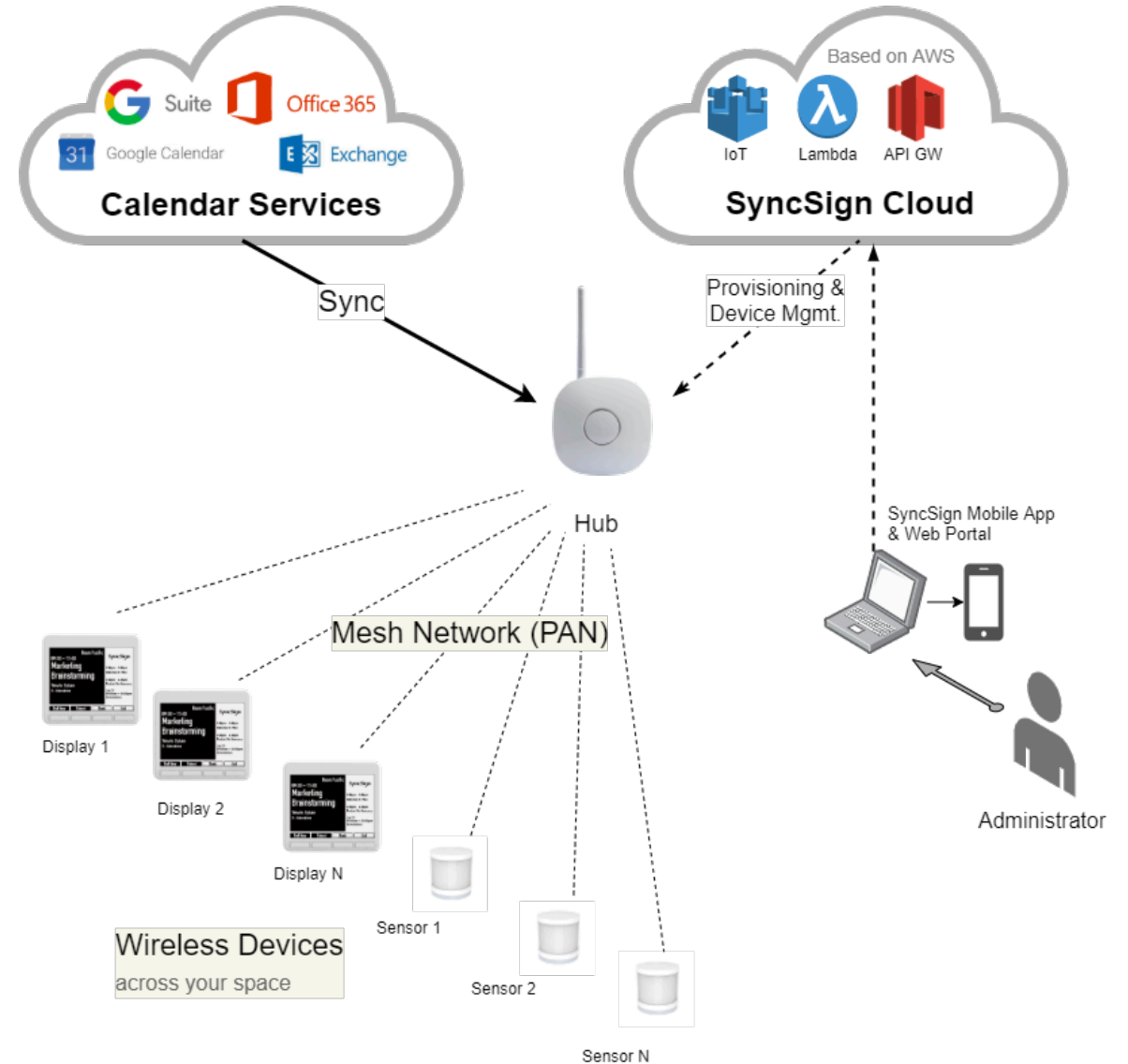
> 365 days

Other (iPad, Tablet)

0.5 day

How Does SyncSign Work?

- The Hub creates a mesh network that connects all displays and sensors.
- The Hub synchronizes the online calendar events, then pushes them to display screens.
- The Hub reads sensors' data and analyzes them on the fly or uploads it to the server.
- Parallel operation possible (e.g., install more hubs on several floors).



Technical Features

Docs: <https://sync-sign.com/developers>



Low Power Mesh Network

- SyncSign doesn't use the traditional Wi-Fi connection in order to save power.
- Incorporate power saving mechanisms. Each display keeps polling Hub for new information every 10 seconds and goes to deep sleep in between.



Managed with Hub

- Uplink with Ethernet or Wi-Fi.
- Ultra low cost bridge between local mesh network and Internet.
- Manage up to 16 individual displays in a single mesh network.



Better Coverage

- SyncSign can cover 20,000 Sq. Ft. space (Concrete, masonry or brick wall may reduce its radio coverage).
- Expand the coverage with more Hubs or Range Extenders.
- 2.4GHz ISM band usage ensures license free product deployment worldwide.



On-Premise Deployment

- Mini server available for on-premises deployment (currently only support MS Exchange integration).
- All your data is located within your in-house server provides more peace of mind.



Secure System

- Only authorized nodes are allowed to join the mesh network.
- All transmissions between display and hub are encrypted with AES-128.
- The connection between hub and cloud server are TLSv1.3 protected.



Open API / SDK

- With Hub SDK, developers can easily write Python code and deploy the application to the hub.
- Integrate with IFTTT or other web services with open API.

One Size Does Not Fit All



[7.5 Inch]

- Designed to display a large amount of information.
- The Best option for conference room signage display in the office, university, stadium.
- As a price & specification board in auto dealership or shopping mall.



[4.2 Inch]

- Recommended for small and medium-sized meeting room & classroom booking, scheduling and management. Or as a personal calendar board.
- Comes with programmable buttons for feedback or simple input.



[2.9 Inch]

- Perfect fit for desk reservation signage in co-working space.
- As a price and inventory tag bar in the supermarket or warehouse.

Occupancy Sensor

- **Get the Most Out of Your Workplace**
- **Year-long Battery Life**
- **Realtime Analytics**
- **Flexible & Self-Install in Minutes**



Make smart decisions about your workspace: Cut costs, plan capacity, and manage competing demands.

- Get a complete picture of occupancy to manage and plan your space.
- Instantly compare desks, departments, floors, and buildings over any time period.
- Ensure meeting rooms are right-sized and used efficiently.
- Boost productivity and satisfaction by making environments better.

Climate Sensor

Humidity & Temperature Sensor

@ Around the Clock Monitoring

Share your devices with colleagues, friends or family. Let others help monitor what's happening.

@ Shared Alerts

When sharing your device with another person you can also choose to add them to any alerts you have set up. Ideal for on-call team members.

@ Real-time Observations

Use the App to view the real-time conditions. Choose who to share the measurements with.

@ Manage Data in One Place

Our App gives you a single place to manage data sharing and gives you a view of who previously had access to the data.



2

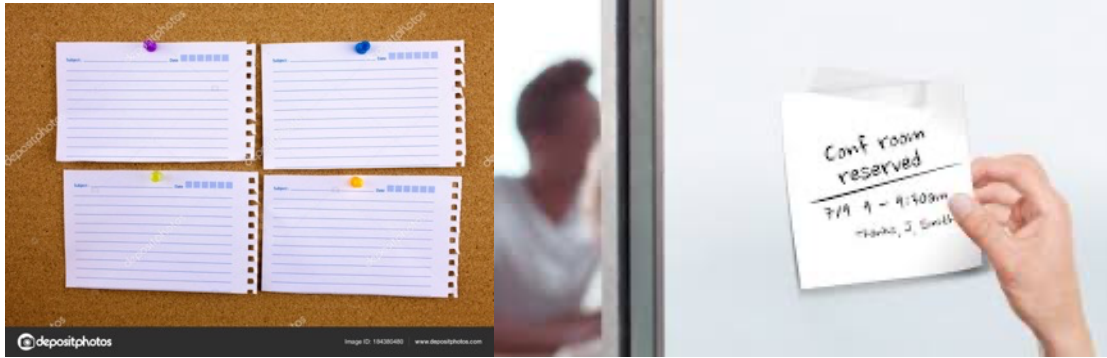
Use Cases



Office ▪ School ■ Hospital ■ Industry ■ Agriculture ■ Supermarket

A Problem to Solve in Office

Still posting the messages in these ways?



Paper & Painting

Low efficiency and
inconvenient to update info



iPad & Tablet

High deployment and
maintenance costs

Not Your Best Choice

SyncSign Use Case - Office

Meeting Room Booking Display

- Minimize Confusion or Overbooking
- No More "Ghost" Booked Rooms
- Sync with Your Existing Calendars
- Flexible & Self-Install in Minutes



SyncSign Use Case - Office

Desk E-Nameplate & Personal Schedule Board

- Easier Hot-desking
- Share Information on the Fly
- Sync with Your Existing Calendars
- Flexible & Self-Install in Minutes



How Booking Sign Works?

When an employee schedules a meeting...



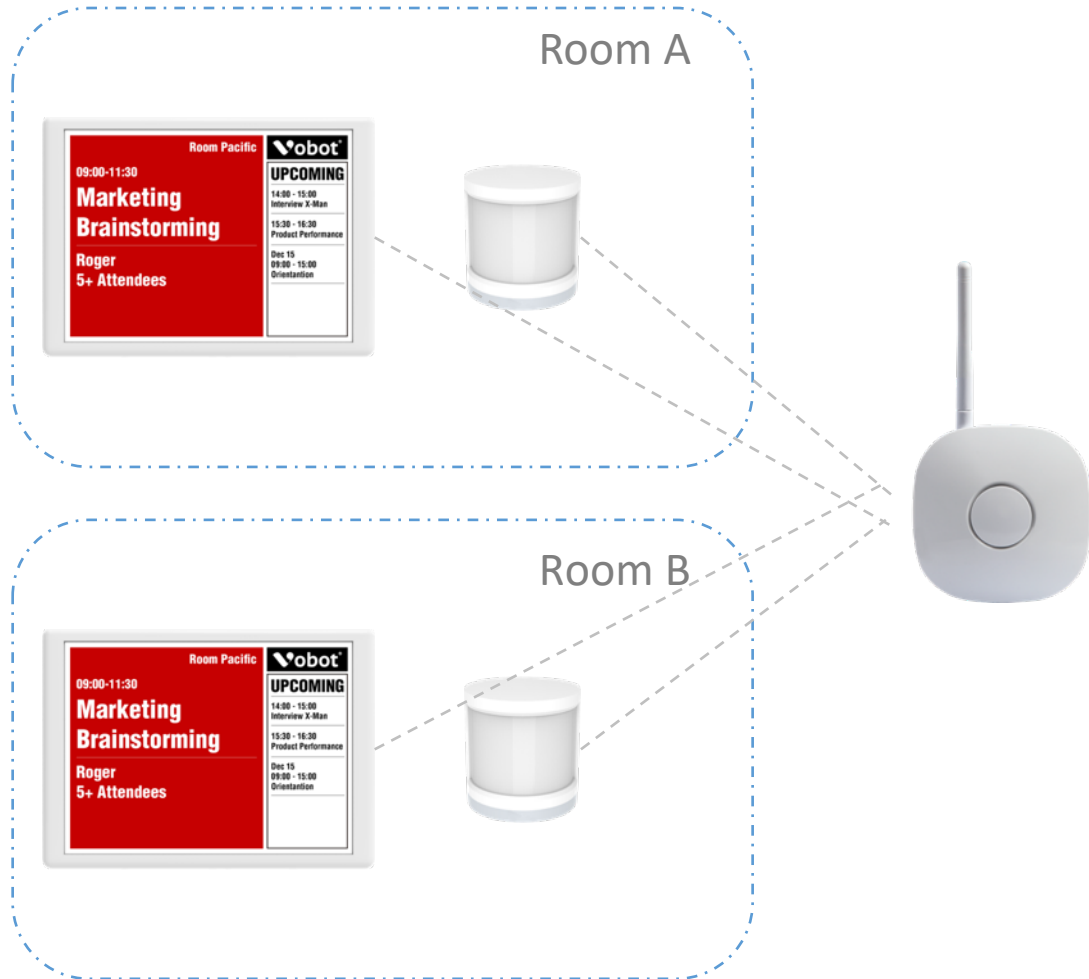
You Own Your Data!

The SyncSign Cloud only forward an "Event Updated" notification to the Hubs in your office. It's doesn't read or save any event details on the cloud. SyncSign also provides on-premise deployment service. So you can create a forwarding service on your own!



SyncSign Use Case - Office

Installation Scheme



[SyncSign Occupancy Sensor Dashboard](#)

SyncSign Use Case - School

Smart Classroom Scheduling Timetable

- Get Rid of Labor-intensive Schedule Updates
- Share Information on the Fly



SyncSign Use Case - Hospital

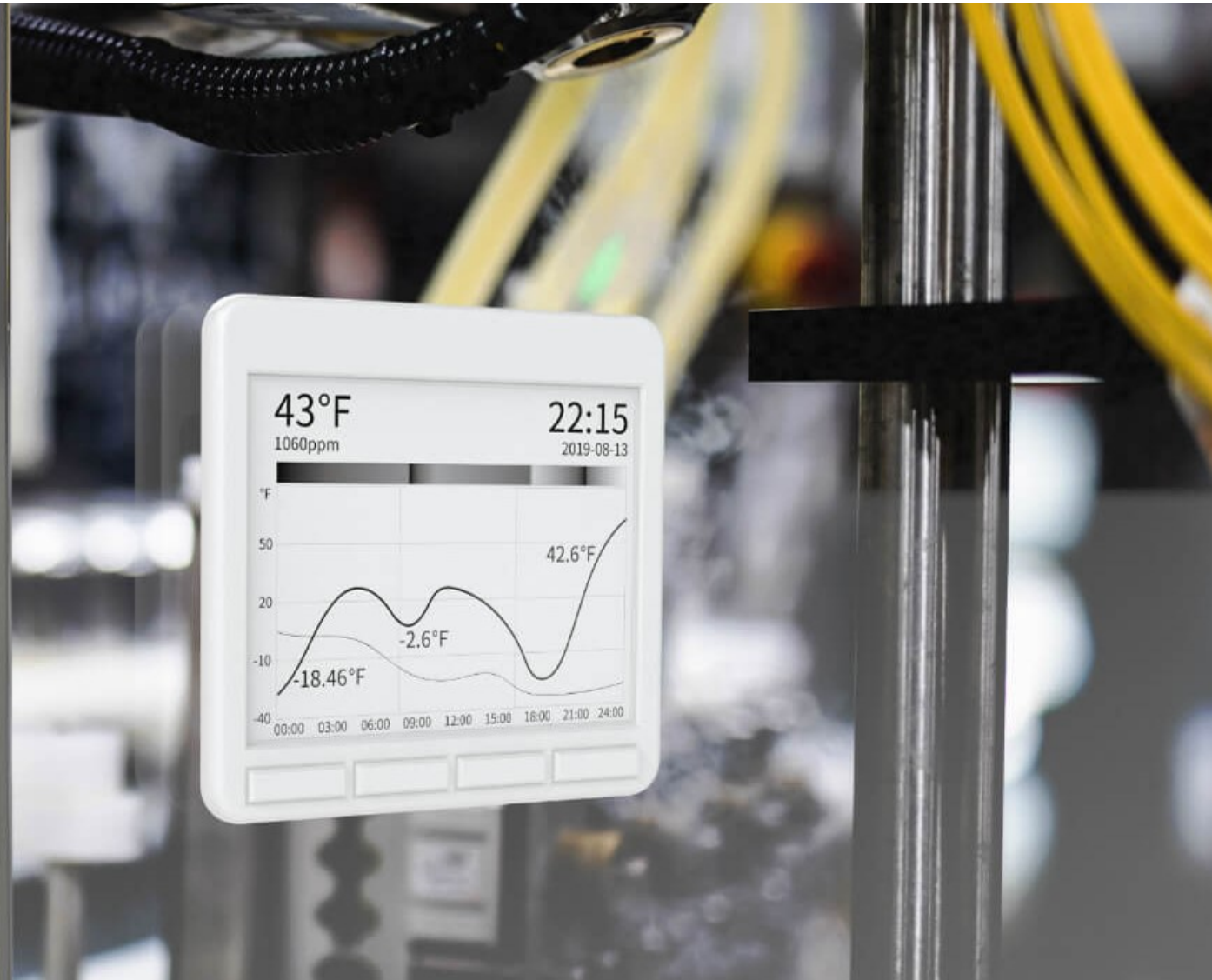
Patient Room Door Sign & Care Sign

- Show patient alerts such as visitor restrictions, allergies or medical precautions.
- Inform the patient's daily schedule, confirm the next step in the patient's care.



SyncSign Use Case - Industry

Manufacturing / Industrial Dashboard



SyncSign Use Case - Agriculture

Temperature / Humidity Monitoring



SyncSign Use Case - Supermarket

Electronic Shelf Label (ESL)



SyncSign's Electronic Shelf Label (ESL) empowers dynamic storewide pricing through an all-in-one, real-time alternative.

For Customer

- Rich commodity information, accurately combined with App to provide comprehensive value-added services;
- Improve interaction;
- Enhance consumer stickiness.



For Retail Enterprises

- Variable price automatic management, reduce labor costs.
- Paperless operation throughout, saving consumables, green environmental protection, energy saving;
- Real-time promotion, different environments (seasons, cycles, etc.), rapid promotion and execution.



For Supplier

- Optimize the workflow of variable price display, etc.
- Provide picking reminder, outstanding reminder, promotion reminder, through the mobile terminal at any time to inquire about goods import, sale, storage, display information.



KEY FEATURES

- ▶ Real-time Flash Responsiveness
- ▶ 3+ Years Battery Life
- ▶ User-friendly Interface
- ▶ Enterprise Level Security
- ▶ Offer Multiple System Implementations



ZigBee/2.4G Communication Protocol



Automatical network

- Electronic price tags support the ability to automatically search base stations and extenders.
- When the previously bound base station fails, the price tag automatically matches the latest base station to ensure stable operation!



Radio Frequency

- Using radio frequency communication technology, it has strong anti-interference ability and ultra-low power consumption.
- Communication distance can be adapted and adjusted according to the application scenario. Data communication is accurate, safe, stable and reliable.



low power consumption

- ESL use S e-paper technology, No power consumption in sleep state.
- Long operating life, two button batteries can be used for more than 5 years.

Point-of-Purchase Ads Display

A point-of-purchase (POP) display is marketing material or advertising placed next to the merchandise it is promoting.

How it works?






A display consists of a **black and white e-paper display** with a transparent color frame (overlay) on top. The underlying segments on the **Electronic Paper Display (EPD)** switch between black and white according to a defined pattern. The change between black and white creates **flashing animation sequences**.



About **70-80%** of the purchasing decisions are made in the store.

The first **4-7 seconds** in front of the products is the most critical moment, often called “the moment of truth” .

Contact Us

-  **Website:** <https://sync-sign.com>
-  **Knowledge Base:** <https://dev.sync-sign.com>
-  **After-sale Service:** <https://help.sync-sign.com>
-  **Sale Support:** sale@sync-sign.com
-  **Business Inquiry:** info@sync-sign.com